





Access Controller Networking / Standalone

Short Light
Standalone
Function
Summary

AR-723H



Interface	Frequency	User capacity	Event log
 RS-485	 125kHz MIFARE DESFire	 1,024 (Networking)	 EVENT 1,200

Take actual objects as products standards and pictures are just for reference

Features

- Selectable working frequencies: 125kHz/ 13.56MHz
- User capacity: 1,024; Event log: 1,200
- Built-in Watchdog to prevent system from hanging
- Including the input of door contact, offering the alarm system of both door opening too long and being forced to open
- Built-in Multi-Output: Door Lock/ Alarm/ Security trigger signal
- 1 bi-color LED and 1 beeper for identification
- Have the "MASTER CARD" functions, convenient operation
- Small and short

AR-721RB

Relay Output Module



- Alternates traditional relay module, raise security, resist from stealing, and avoid wrong operation
- Supports N.O. type Egress button input
- Supports security trigger signal for relay active
- Support 4 delay time: 0.1, 3, 6, 9 sec.
- Easy Delay Time setting via DIP SW
- Contact capacity up to 12A/125VAC, 7A/250AC, 7A/30VDC

SOYAL[®]

ACCESS CONTROL SYSTEM RFID solutions · Proximity & Smart cards · Hardware & Software OEM/ODM Service

RoHS Compliant SOR FC CE MA

Access Controller AR-723H



Specification

Frequency	125kHz	13.56MHz
Standard	EM Standard	·ISO14443A/B ·ISO15693
Reading Range (Depending on tag or card)	8-12cm	2-8cm
Power Supply	9-16VDC	
Power Consumption	<1W	
Communication Interface	No	RS-485
Baud Rate	No	9600 bps(N,8,1)
Operating Temperature	-20 °C to +60 °C	
Digital Input	Egress(R.T.E.) / Door contact	
Relay Output	No	
Lock Relay Time	10 Sec.	Toggle, 0.1-600 Sec.
Alarm Time	10 Sec.	Toggle, 1-600 Sec.
Tamper Switch	No	
User Capacity	100	1,024
Event Log	No	1,200
External Reader	No	WG26/34
Anti-pass-back	No	
Lift Control	No	
Serial Port	No	
Real Time Clock	No	Yes(Networking Only)
LCD Panel	No	
Door Bell Button	No	
Transistor Output	Lock/ Alarm/ Security trigger signal	
Protection standard	IP54	
Indicator	1 Bi-Color LED & 1Beeper	
Keypad Material	No	
Housing Material	ABS	
Time Zone	No	
Operating Mode	Standalone	Standalone/ Networking
Color	Black/Gray/Silver/Pearl White/ Blue/Green/Yellow/Orange/Red	
Dimension(mm)	81(L)X43(W)X18(H)	
Weight(g)	40±5	57±5

Dimension(mm)

AR-723H

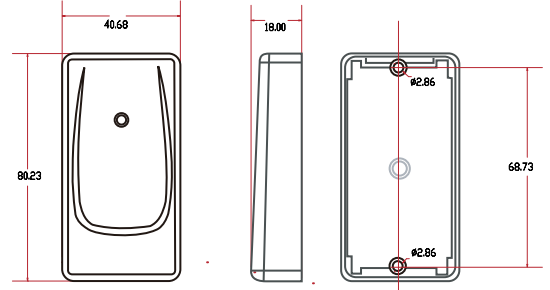
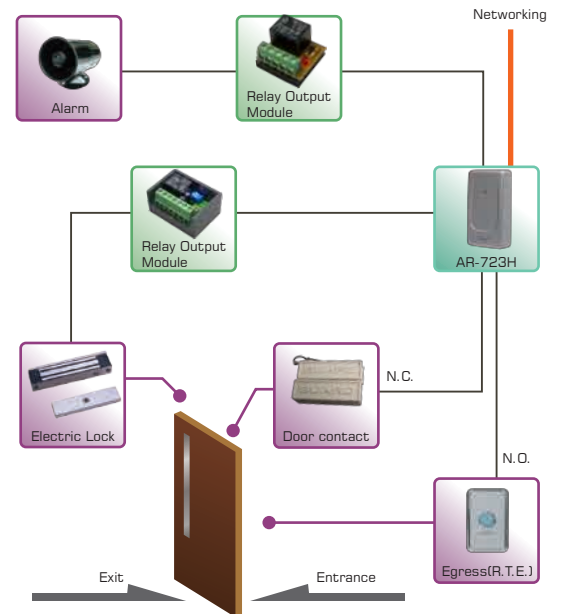
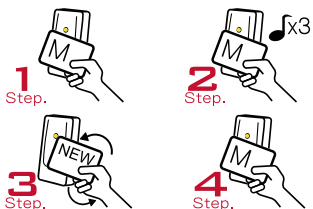


Diagram of Basic application for single door



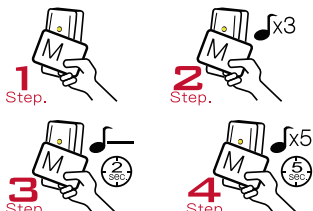
About Master Card

Adding Tag



1. Present Master Card
2. After 3 short beeps [Access programming mode]
3. Present one new card at a time
4. Present Master Card [Exit programming mode]

Deleting All Tags



1. Exit programming mode]
 2. After 3 short beeps [Access programming mode]
 3. 1 long warning beep after 2sec.
 4. 5 short beeps after 5sec: cards cleared
- P.S. Once MASTER CARD is presented after one warning beep, all card data will be cleared.

Application



Authorized dealer